



**HI—I'M RIBBIT,
THE NEWEST WEPP PARTNER!**

**DID YOU KNOW THAT PARTNERS, LIKE US CAN HOST
EDUCATIONAL SESSIONS FOR OUR WEPP VOLUNTEERS?**

**THERE ARE SPEAKERS WAITING ON LILYPADS
(QUITE CLUMSILY, I MIGHT ADD) TO OFFER A SESSION AT OUR
LOCALES TO INSTRUCT WEPP VOLUNTEERS ABOUT THE LIFE
AND HAPPENINGS IN EPHEMERAL PONDS.**

**AND, WEPP HAS \$\$ TO PAY FOR THEM TO
MAKE THEIR PRESENTATION!!**

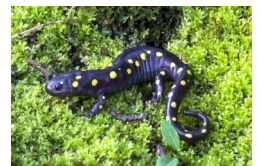


HERE'S ALL YOU NEED TO DO:

1. Contact Tom Bernthal (608-266-3033) to let him know you want to use grant funds for a WEPP Enrichment program.
2. Contact the appropriate speaker below and work with the her or him to tailor the program for your volunteers. Provide Tom with the name of the speaker(s) you recruited and he will pay them directly.
3. Work with Gail (414-256-4632) to promote!!
4. Take photos, attendance and more photos and submit to Gail.



EXPERT PRESENTERS



Gary Casper, Biologist

gc@greatlakeseco.com or 262-689-4095

Expertise in amphibian and reptile biology and monitoring

Mary Linton, Wetland Ecologist

snappinglinton@gmail.com or 920-568-3832

Expertise in aquatic macroinvertebrates and amphibians, and ephemeral pond ecology.

Also available to help volunteers on amphibian identification and on the protocol:

Randy Hetzel, Biologist

olgrizzly@myexel.com or 414-507-5786

Expertise in wildlife ecology with an emphasis on reptiles & amphibians (live animals)

Joanne Kline

Joanne.kline@wisconsin.gov or 414-263-8756