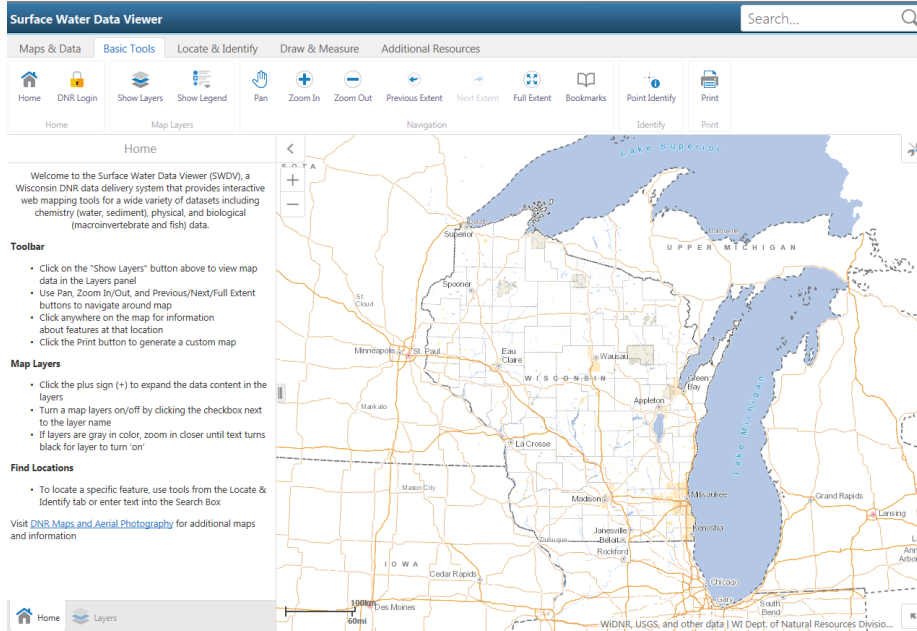


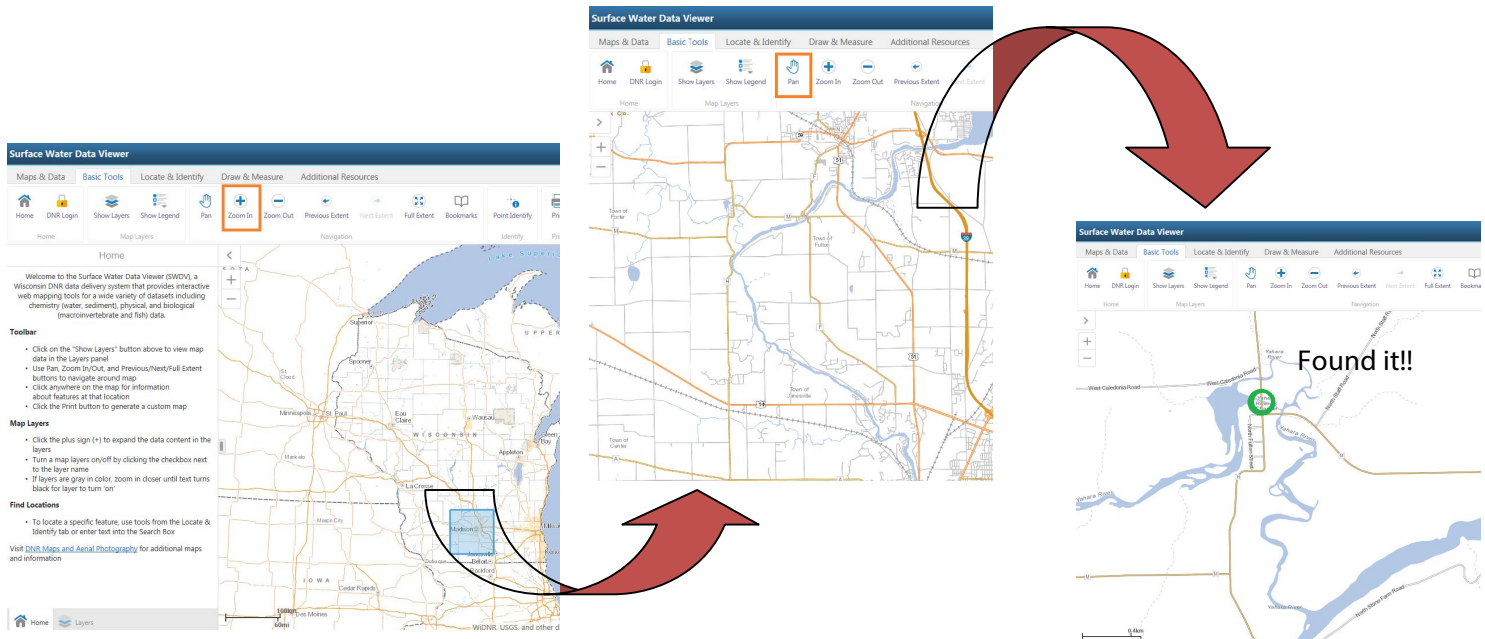
Finding New Site Locations using Surface Water Data Viewer

To locate your station and obtain latitude/longitude information necessary for WAV staff to set your station up in SWIMS, please use the DNR Surface Water Data Viewer (SWDV).

1. To access the SWDV go to: <https://dnrmaps.wi.gov/H5/?Viewer=SWDV>

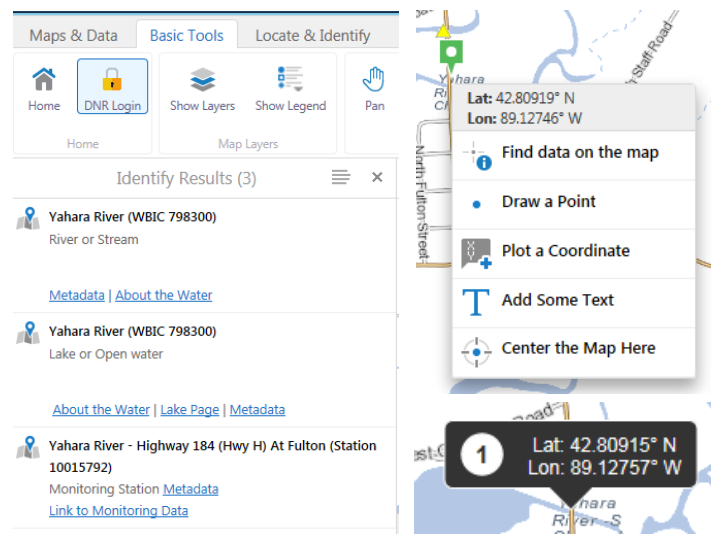
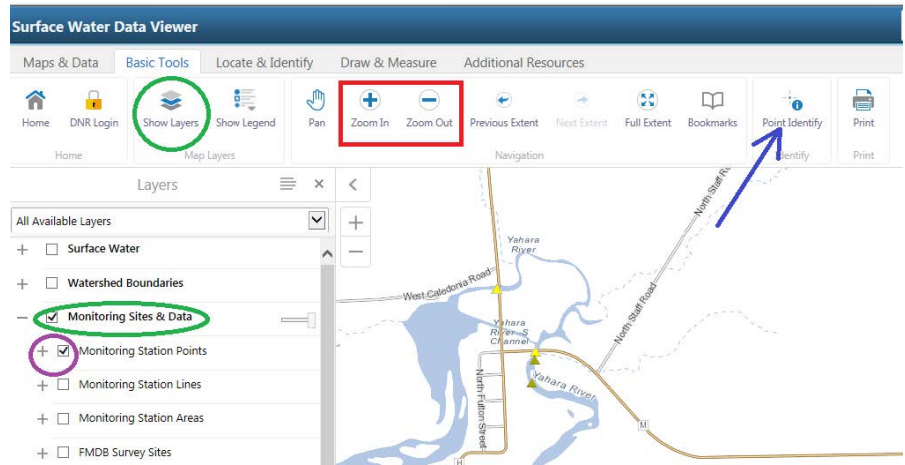


2. Click on the 'Zoom In' button found in the top menu bar (highlighted in orange below).
3. Click and drag your mouse to draw a rectangle around the area you want to zoom into or just click anywhere on the map.
4. Repeat this process until you have zoomed in enough to pinpoint your monitoring location.



Check if there is already a monitoring station at your site.

5. Click on **Show Layers** at the top.
6. Click on the '+' next to the **Monitoring Sites & Data** on the left.
7. Check the **Monitoring Station Points** box and look for a triangle or a star at your site.
8. If there is one, a station already exists.
9. Click on the **Point Identify** button.
10. Then click on the triangle or star at your site.
11. A **Results** window will appear to the left (shown at right).
12. Record the station name, stream name, county, and road crossing to report to WAV.
13. If there is no established monitoring station (no triangle or star at your site), right click on the location to drop a pin.
14. Select **Plot Coordinates**.
15. Latitude and longitude will appear.
16. Write these down to report to WAV.



17. Submit this information on the online station request form available at (<http://watermonitoring.uwex.edu/wav/monitoring/database.html>). You will need:
 - a. Your name and email
 - b. Site Description (stream name and road crossing)
 - c. County
 - d. Latitude and Longitude (in decimal degrees)
 - e. Station ID (if monitoring an existing station)



18. WAV staff will contact you once the monitoring station is set up and registered for your use in the DNR's SWIMS database.
19. Please allow at least one week for your registration to be processed.